



Vinitex Desagüe + Paragravillas



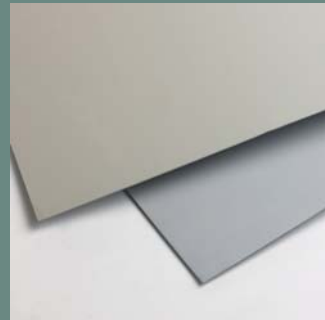
Vinitex Gárgola



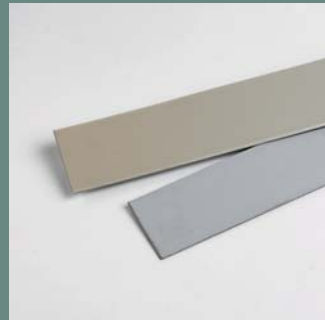
Vinitex Esquina



Vinitex Rincón



Vinitex Colaminado - Plancha



Vinitex Colaminado - Tira



Vinitex Adhesivo Soporte



Vinitex Líquido

- The most complete range for different solutions, adaptable to any type of roof, adjusting to all types of details.
- Roll width of up to 2 m, reducing the number of overlaps and therefore offering greater execution speed.
- Self-extinguishing
- Excellent UV radiation resistance
- Rotproof and with high ageing resistance
- Root-resistant
- Thermofusible laps, without the need of flame, thus making installation less dangerous
- The fibreglass mesh reinforcement provides maximum dimensional stability, both crosswise and lengthwise
- Lightweight solution for metal decks, mechanical fastening is allowed.
- Installation by highly qualified applicators

TexsaSynthetics

- TEXSA SYNTHETICS is a Spanish company belonging to the TEXSA group, specialised in synthetic and geosynthetic membranes for the waterproofing industry
- TEXSA SYNTHETICS is dedicated to the constant search for new products and systems, to provide comprehensive solutions according to project requirements, meeting the demands of this important sector.
- TEXSA SYNTHETICS has a wide range of products and its customers can count on personal expert technical and customer service.
- TEXSA SYNTHETICS counts on more than 50 years experience of the TEXSA group, carrying out constant internal and external quality controls.

Central office
TEXSA SYNTHETICS, S.A.
 Llanos de Jerez, 1
 28820 Coslada (Madrid) Spain
 Tel. (+34) 91 673 69 19
 Fax (+34) 91 674 36 44
 E-mail: info@texsasynthetics.com
<http://www.texsasynthetics.com>

Factory
 Calle Ferro, 7
 Polígono Can Pelegrí
 08755 Castellbisbal (Barcelona)
 Spain



● Barcelona Airport. VINITEX MP - 42.000 m²

PVC **Vinitex**
 Waterproofing roof systems

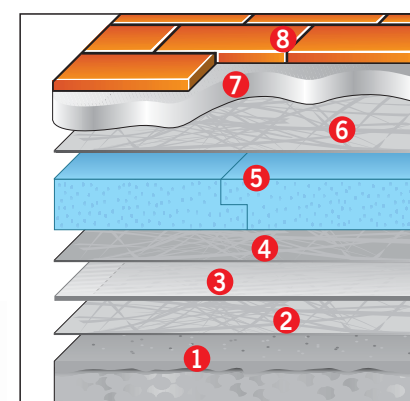


VINITEX is a flexible synthetic polyvinyl chloride (PVC-P) waterproofing membrane, reinforced with mesh and manufactured exclusively with virgin resins, obtaining a homogenous plasticised PVC membrane with high durability.

Examples of waterproofing systems

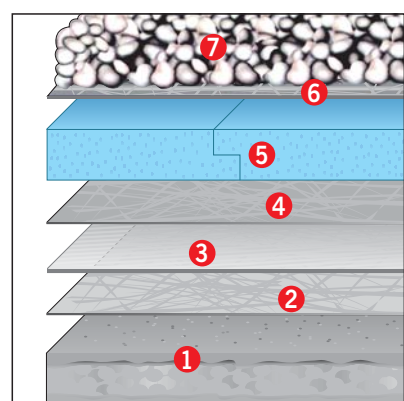
For further information see www.texasynthetics.com

Trafficable flat roof Ceramic tile



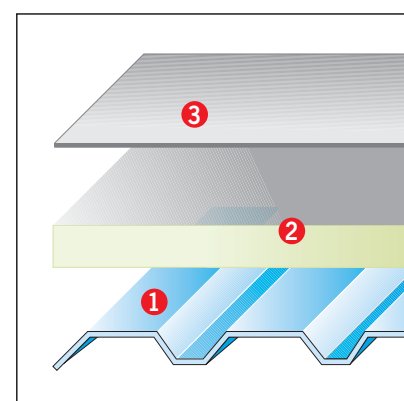
1. Concrete substrate and Slope formation
2. Geotextile Separating Layer Rooftex 300
3. Waterproofing membrane VINITEX MAT
4. Geotextile Separating layer Rooftex 200
5. Thermal Insulation Roofmate SL
6. Geotextile Separating layer Rooftex 300
7. Mortar
8. Ceramic tile

Non - Trafficable flat roof Rounded gravel



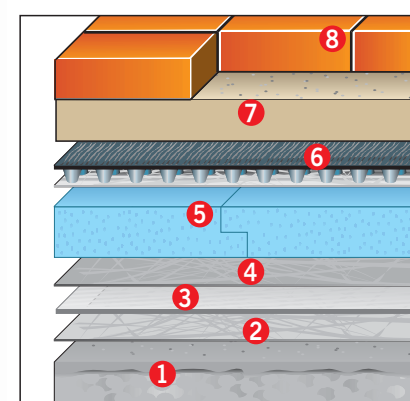
1. Concrete substrate and slope formation
2. Geotextile Separating layer Rooftex 300
3. Waterproofing membrane VINITEX MAT
4. Separating layer Rooftex 200
5. Thermal insulation Roofmate SL
6. Geotextile Separating layer Rooftex 300
7. Rounded gravel

Non - Trafficable metal deck Mechanically fastened exposed membrane



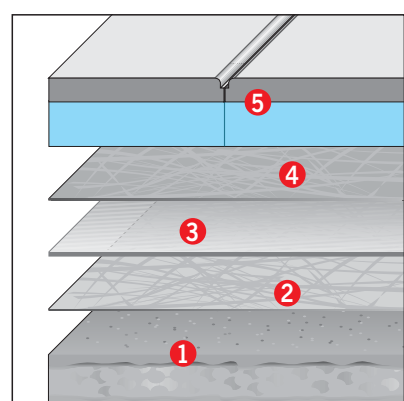
1. Metal sheet support
2. Thermal Insulation Aisladeck AL
3. Waterproofing membrane VINITEX MP

Trafficable flat roof Paving stone over sand bed



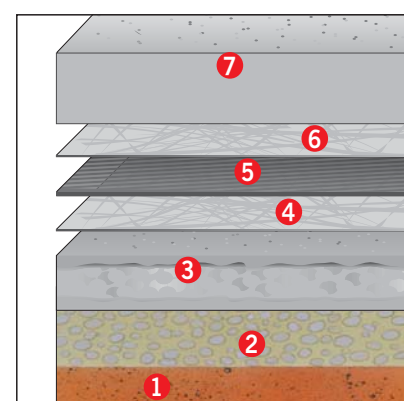
1. Concrete substrate and slope formation
2. Geotextile Separating layer Rooftex 300
3. Waterproofing membrane VINITEX MAT
4. Geotextile Separating layer Rooftex 200
5. Thermal Insulation Roofmate SL
6. Geotextile Separating layer Rooftex 300
7. Sand bed
8. Paving stone

Trafficable flat roof Insulation tile Texlosa



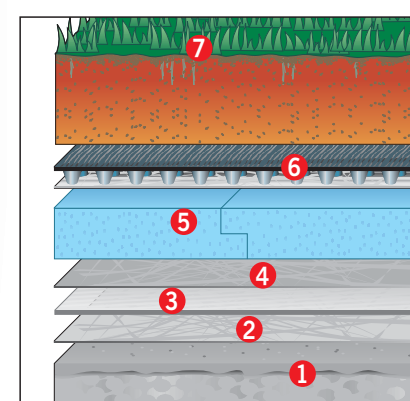
1. Concrete substrate and slope formation
2. Geotextile Separating layer Rooftex 300
3. Waterproofing membrane VINITEX MAT
4. Geotextile Separating layer Rooftex 300
5. Insulating Tile Texlosa

Concrete Floors



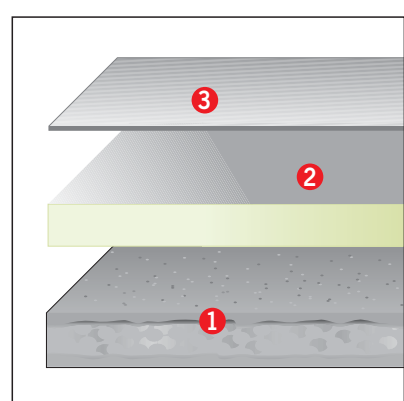
1. Ground
2. Gravel
3. Grading Mortar
4. Geotextile Separating layer Geoland 200
5. Waterproofing membrane VINITEX Sani
6. Geotextile Separating layer Geoland 200
7. Concrete Floor

Trafficable flat roof Roof Garden



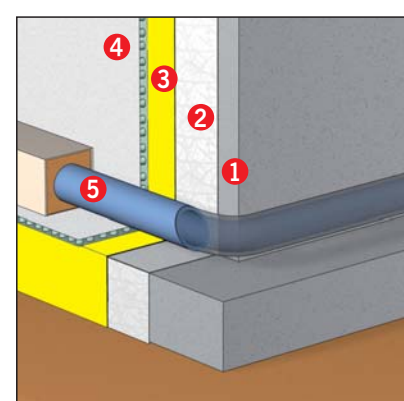
1. Concrete substrate and slope formation
2. Geotextile Separating layer Rooftex 300
3. Waterproofing membrane VINITEX MAT
4. Geotextile Separating layer Rooftex 200
5. Thermal Insulation Roofmate SL
6. Sheet drain Drentex Impact Garden
7. Soil finish

Non - Trafficable flat roof Mechanically fastened exposed membrane



1. Concrete substrate and slope formation
2. Thermal Insulation Aisladeck AL
3. Waterproofing membrane VINITEX MP

Foundation Wall



1. Substrate
2. Geotextile Separating layer Geoland 200
3. Waterproofing membrane VINITEX SL
4. Sheet drain Drentex Protect Plus
5. Drainpipe

Synthetic membranes

Product	Colour	Thickness (mm)	Low temperature pliability	U.V. ray resistance	Reinforcement	Packaging	
						Roll (m)	m ² /palet
Vinitex MP	Grey Anthracite Terracota	1.2	≥-25°C without cracks	YES	Polyester mesh	1.04 x 30 / 2.05 x 20	468 / 738
		1.5				1.04 x 30 / 2.05 x 20	468 / 738
		1.8				1.04 x 30 / 2.05 x 15	468 / 553
Vinitex MFV	Grey	1.2 1.5	≥-25°C without cracks	YES	Fibre glass mesh	2.05 x 20 2.05 x 20	738 738
Vinitex MAT	Grey	1.2	≥-25°C without cracks	YES	Fibre glass mat	2.05 x 20	738
		1.5				2.05 x 20	738
		1.8				2.05 x 15	553
Vinitex FVni	Black	1.2 1.5	≥-25°C without cracks	NO	Fibre glass mesh	2.05 x 20 2.05 x 20	738 738
Vinitex MATni	Black	1.2 1.5	≥-25°C without cracks	NO	Fibre glass mat	2.05 x 20 2.05 x 20	738 738
Vinitex SA	Grey	1.2 1.5	≥-25°C without cracks	YES	Non reinforced	2.05 x 20 2.05 x 20	738 738
Vinitex SAni	Black	1.2 1.5	≥-25°C without cracks	NO	Non reinforced	2.05 x 20 2.05 x 20	738 738
Vinitex MAT FB (fleeback)	Grey	1.2	≥-25°C without cracks	YES	Fibre glass mat	2.05 x 20	738
		1.5				2.05 x 20	738
		1.8				2.05 x 15	553
Vinitex MATni FB (fleeback)	Black	1.2 1.5	≥-25°C without cracks	NO	Fibre glass mat	2.05 x 20 2.05 x 20	738 738

Auxiliary products

Product	Characteristics	Packaging
Vinitex Desagüe + Paragravillas D 63-75-82-90-100-110 mm	Vertical Drain and Gravelguard for vertical water outlets	5 Un. Packs
Vinitex Gárgola 45°- D100 mm 90°- D63-90-110 mm 90° -100x100 mm	Horizontal Drain and Gravelguard for water runoff from the roof	6 Un. Packs
Vinitex Esquina	Pre-molded PVC for outside corner	100 Un. Packs
Vinitex Rincón	Pre-molded PVC for inside corner	200 Un. Packs
Vinitex Colaminado - Plancha	Galvanized steel sheet coated with a layer of thick non-reinforced PVC, user for perimeter anchoring and wall finishes	1,00 x 2,00 m Un.
Vinitex Colaminado - Tira	Galvanized steel strip coated with a layer of thick non-reinforced PVC, user for perimeter anchoring and wall finishes	0,05 x 2,00 m Un.
Vinitex Adhesivo Soporte	Adhesive for bonding PVC membranes to different substrates	Pail of 25 kg
Vinitex Líquido	Grey / Transparent	1 litre pails
Silicone pressure roller	Pressure roller with silicone cylinder for applying the membranes	Un.